

AVALON ELEMENTARY SCHOOL CALENDAR 2015-2016

2015 - 2016

IMPORTANT DATES

SEPTEMBER

S	M	T	W	T	F	S
		1	2	3	4	5
6	7	8	9	10	11	12
13	14	15	16	17	18	19
20	21	22	23	24	25	26
27	28	29	30			

OCTOBER

S	M	T	W	T	F	S
					1	2
3	4	5	6	7	8	9
10	11	12	13	14	15	16
17	18	19	20	21	22	23
24	25	26	27	28	29	30
31						

NOVEMBER

S	M	T	W	T	F	S
1	2	3	4	5	6	7
8	9	10	11	12	13	14
15	16	17	18	19	20	21
22	23	24	25	26	27	28
29	30					

DECEMBER

S	M	T	W	T	F	S
			1	2	3	4
5	6	7	8	9	10	11
12	13	14	15	16	17	18
19	20	21	22	23	24	25
26	27	28	29	30	31	

JANUARY

S	M	T	W	T	F	S
					1	2
3	4	5	6	7	8	9
10	11	12	13	14	15	16
17	18	19	20	21	22	23
24	25	26	27	28	29	30
31						

FEBRUARY

S	M	T	W	T	F	S
	1	2	3	4	5	6
7	8	9	10	11	12	13
14	15	16	17	18	19	20
21	22	23	24	25	26	27
28	29					

MARCH

S	M	T	W	T	F	S
			1	2	3	4
5	6	7	8	9	10	11
12	13	14	15	16	17	18
19	20	21	22	23	24	25
26	27	28	29	30	31	

APRIL

S	M	T	W	T	F	S
					1	2
3	4	5	6	7	8	9
10	11	12	13	14	15	16
17	18	19	20	21	22	23
24	25	26	27	28	29	30

MAY

S	M	T	W	T	F	S
1	2	3	4	5	6	7
8	9	10	11	12	13	14
15	16	17	18	19	20	21
22	23	24	25	26	27	28
29	30	31				

JUNE

S	M	T	W	T	F	S
			1	2	3	4
5	6	7	8	9	10	11
12	13	14	15	16	17	18
19	20	21	22	23	24	25
26	27	28	29	30		

17 days

SEPTEMBER

2-INSERVICE DAY

7- LABOR DAY

8-FIRST DAY FOR STUDENTS

20 days

OCTOBER

9 - STAFF INSERVICE

12 - COLUMBUS DAY HOLIDAY

16 days

NOVEMBER

4 - STAFF INSERVICE

5-6 - NJEA CONVENTION

25 - EARLY DISMISSAL, 26-27 THANKSGIVING

17 days

DECEMBER

23- EARLY DISMISSAL

24 - Jan. 1 - WINTER BREAK

19 days

JANUARY

18 - MLK HOLIDAY

19 days

FEBRUARY

12-15 PRESIDENTS' DAY

18 days

MARCH

24 EARLY DISMISSAL

25-1 SPRING BREAK

20 days

APRIL

1-SPRINK BREAK

21 days

MAY

30 - MEMORIAL DAY HOLIDAY

13 days

JUNE

13-17 EARLY DISMISSAL

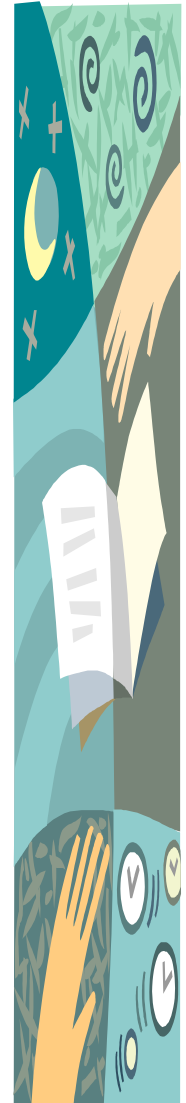
17 - LAST DAY OF SCHOOL

235 32nd Street

Avalon, NJ 08202

609.967.7544

<http://avesnj.org>



Marking Period Ends

MP 1:	11/16/15
MP 2:	2/1/16
MP 3:	4/14/16
MP 4:	6/10/16

Progress Reports

10/7/15
12/18/15
3/4/16
6/16/16

Report Card Dates

11/16/15
2/8/16
4/21/16
6/17/16

